



# **ENROLLMENT PROJECTIONS**

2015-2016 through 2024-2025

March 3, 2015

# TABLE OF CONTENTS

Preface.....	1
Five-Year Historical Enrollment (2010-11 through 2014-15).....	2
Five-Year Enrollment Projection (2015-16 through 2019-20) .....	3
Relationship of Olmsted County Births and Kindergarten Enrollments 5-Years Later.....	4
Ten-Year Enrollment Projection by Grade (2015-16 through 2024-25).....	5
Enrollment (1995-2014 Actual/2015-24 Projected).....	6
2014-15 Public School Enrollment by School and Grade.....	7
2014-15 Nonpublic School Enrollment by School and Grade .....	8
Public, Nonpublic, Home School Enrollments (25-Year Comparison) .....	9
Nonpublic, Charter, Home School Enrollment History .....	10
End of Year District ADM Report - Enrollment Options.....	11
Top 13 Districts for Enrollment Options.....	12
Ethnicity Report (2010-11 through 2014-15).....	13
Comparison of Projected Enrollments with Actual Enrollments (1995-96 through 2014-15) .....	14

## PREFACE

Rochester Public Schools approaches enrollment projections in a serious and conservative manner. Accurate enrollment projections are the cornerstone of planning for school districts. Budget development, educational programs, classroom space, and staff assignments are all planned based on enrollment projections. In addition, long-range financial planning, facility planning, and program planning are all dependent on accurate enrollment projections.

If school district enrollment is more than projected, it may require hiring staff at the last minute, making it more difficult to hire qualified staff. A district can be more selective in hiring if it is done early. If school district enrollment is less than projected, too many staff may have already been hired, with contracts that cannot be canceled for a year. Because funding for school districts is based on actual enrollment, expenses would likely exceed revenues and negatively impact its financial condition.

Accurate enrollment projections allow a district and community to plan effectively for changes in enrollment patterns in order to continue delivery of quality education without interruption, and by providing the information on which to make decisions about facilities and funding. The projections in this report are based on the four-year average of historical progression of students from grade-to-grade. This methodology accounts for in-migration and out-migration of families and assumes that the same percentage of students will move from grade-to-grade as in previous years. A four-year average helps to provide a conservative projection during increasing enrollment.

The enrollment projections for future years are significantly influenced by the kindergarten projection, which is the most difficult to project. The kindergarten projections in this report are based on a conservative retention of 60.2% of Olmsted County births arrived at through the use of statistical regression analysis. In addition to using a statistical calculation, the District also takes into consideration other changes that impact the enrollment for the District. For 2015-2016 these specific assumptions include the opening of a new charter school serving grades 6 through 10, and no changes in Special Programs enrollment.

Enrollment projections are based on October numbers. However, October Early Childhood enrollment only reflects students identified by October 1<sup>st</sup>. As students are identified and tested throughout the year, this number increases. Future counts for Early Childhood are predicted to grow at the four-year average rate through October 2018. From there we assume a constant enrollment until birth records are analyzed for 2015. Early Childhood enrollment continues to climb due to earlier identification of the student needs.

Special Programs include Newcomer classrooms, Rochester Alternative Learning Center, Care & Treatment, and Special Education students served out of the District. These special programs are challenging to predict as there is significant movement in and out during the year. The assumptions show Special Programs remaining constant from year-to-year given the high rate of turnover within any given year.

Enrollment projections change from year-to-year, as does a budget. Each year we have a slightly different set of numbers from which to project. We have an additional year of actual enrollments, a new year of actual births and new information about our community which impacts projections. Staying on top of these changes provides for better, more accurate planning.

Questions or comments regarding this report are welcome.

Sincerely,

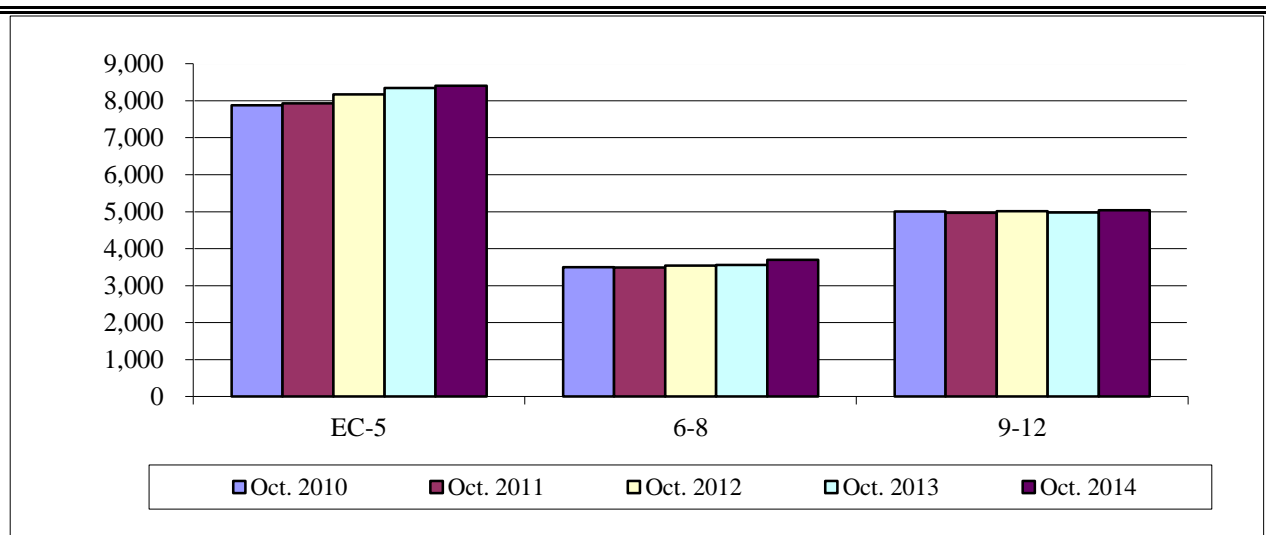
Larry Smith  
Executive Director of Finance  
(507) 328-4210

## FIVE-YEAR HISTORICAL ENROLLMENT

**2010-11 THROUGH 2014-15**

(Based on October 1st Enrollment )

	Oct. 2010	Oct. 2011	Oct. 2012	Oct. 2013	Oct. 2014
Early Childhood	180	215	228	239	246
Kindergarten	1,315	1,262	1,326	1,380	1,321
Grade 1	1,339	1,312	1,293	1,343	1,389
Grade 2	1,310	1,289	1,312	1,282	1,325
Grade 3	1,208	1,307	1,265	1,286	1,293
Grade 4	1,179	1,201	1,317	1,241	1,301
Grade 5	1,172	1,156	1,184	1,298	1,244
Special Programs	174	192	247	279	285
<b>TOTAL</b>	<b>7,877</b>	<b>7,934</b>	<b>8,172</b>	<b>8,348</b>	<b>8,404</b>
Grade 6	1,132	1,168	1,166	1,172	1,289
Grade 7	1,171	1,113	1,177	1,147	1,164
Grade 8	1,126	1,146	1,116	1,164	1,138
Special Programs	73	66	86	80	105
<b>TOTAL</b>	<b>3,502</b>	<b>3,493</b>	<b>3,545</b>	<b>3,563</b>	<b>3,696</b>
Grade 9	1,237	1,171	1,195	1,169	1,214
Grade 10	1,236	1,151	1,181	1,165	1,134
Grade 11	1,106	1,176	1,102	1,130	1,119
Grade 12	1,114	1,156	1,153	1,104	1,155
Special Programs	312	314	386	410	422
<b>TOTAL</b>	<b>5,005</b>	<b>4,968</b>	<b>5,017</b>	<b>4,978</b>	<b>5,044</b>
<b>GRAND TOTAL</b>	<b>16,384</b>	<b>16,395</b>	<b>16,734</b>	<b>16,889</b>	<b>17,144</b>

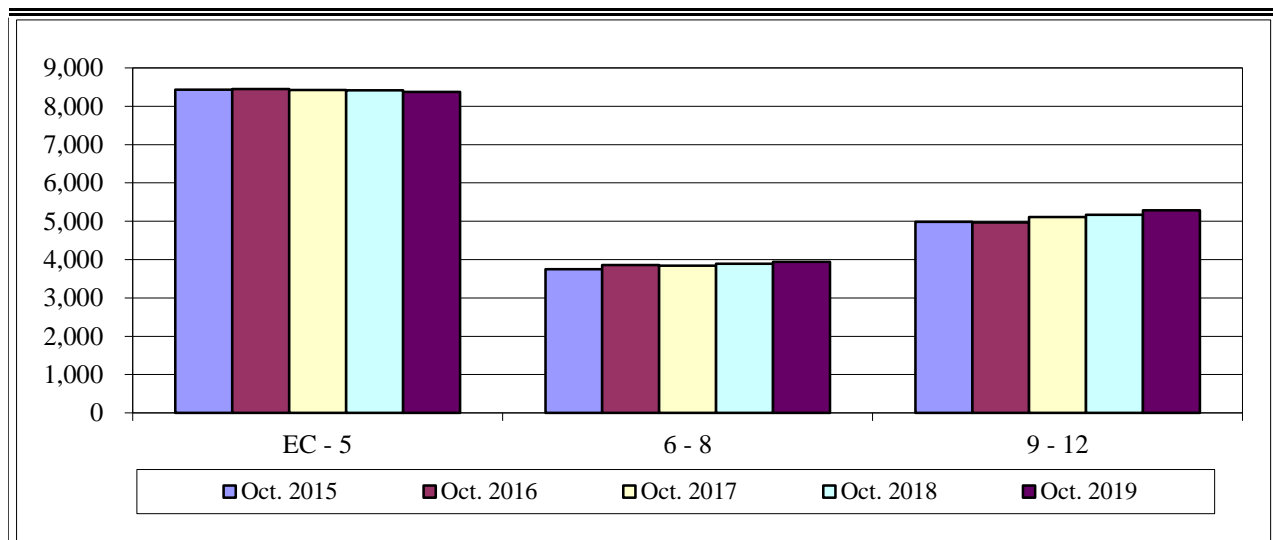


## FIVE-YEAR ENROLLMENT PROJECTION

**2015-2016 THROUGH 2019-2020**

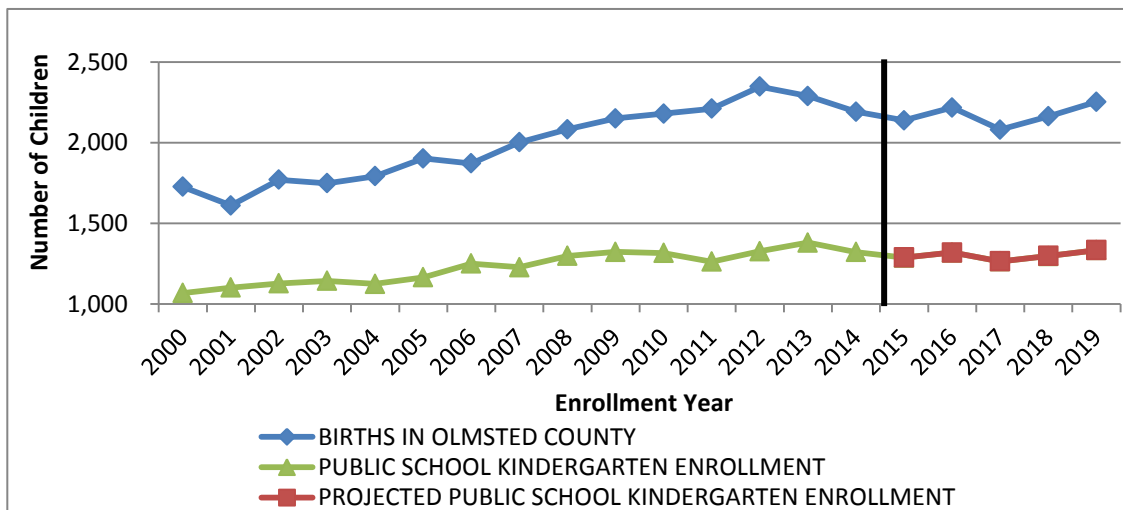
(Based on October 1st Enrollment )

	Oct. 2015	Oct. 2016	Oct. 2017	Oct. 2018	Oct. 2019
Early Childhood	265	285	307	331	331
Kindergarten	1,287	1,318	1,264	1,297	1,333
Grade 1	1,335	1,300	1,331	1,277	1,310
Grade 2	1,368	1,315	1,281	1,311	1,258
Grade 3	1,314	1,357	1,304	1,271	1,300
Grade 4	1,291	1,312	1,355	1,302	1,269
Grade 5	1,287	1,277	1,297	1,340	1,287
Special Programs	285	285	285	285	285
<b>TOTAL</b>	<b>8,432</b>	<b>8,449</b>	<b>8,424</b>	<b>8,414</b>	<b>8,373</b>
Grade 6	1,230	1,273	1,263	1,283	1,326
Grade 7	1,269	1,220	1,263	1,253	1,273
Grade 8	1,143	1,257	1,208	1,251	1,241
Special Programs	105	105	105	105	105
<b>TOTAL</b>	<b>3,747</b>	<b>3,855</b>	<b>3,839</b>	<b>3,892</b>	<b>3,945</b>
Grade 9	1,177	1,192	1,311	1,260	1,305
Grade 10	1,168	1,142	1,157	1,272	1,223
Grade 11	1,085	1,117	1,092	1,107	1,217
Grade 12	1,132	1,098	1,130	1,105	1,120
Special Programs	422	422	422	422	422
<b>TOTAL</b>	<b>4,984</b>	<b>4,971</b>	<b>5,112</b>	<b>5,166</b>	<b>5,287</b>
<b>GRAND TOTAL</b>	<b>17,163</b>	<b>17,275</b>	<b>17,375</b>	<b>17,472</b>	<b>17,605</b>



**RELATIONSHIP OF OLMSTED COUNTY BIRTHS  
AND KINDERGARTEN ENROLLMENTS 5-YEARS LATER  
1995-2014**

BIRTH YEAR	BIRTHS IN OLMSTED COUNTY	KINDERGARTEN ENROLLMENT YEAR	PUBLIC SCHOOL KINDERGARTEN ENROLLMENT	PERCENT ENROLMENT TO BIRTHS
1995	1,726	2000	1,067	61.8%
1996	1,610	2001	1,101	68.4%
1997	1,770	2002	1,127	63.7%
1998	1,748	2003	1,143	65.4%
1999	1,791	2004	1,124	62.8%
2000	1,902	2005	1,164	61.2%
2001	1,871	2006	1,250	66.8%
2002	2,002	2007	1,227	61.3%
2003	2,082	2008	1,297	62.3%
2004	2,150	2009	1,322	61.5%
2005	2,179	2010	1,315	60.3%
2006	2,210	2011	1,262	57.1%
2007	2,347	2012	1,326	56.5%
2008	2,289	2013	1,380	60.3%
2009	2,191	2014	1,321	60.3%
2010	2,138	2015	1,287	(est) 60.2%
2011	2,217	2016	1,318	(est) 59.5%
2012	2,080	2017	1,264	(est) 60.8%
2013	2,163	2018	1,297	(est) 60.0%
2014	2,253	2019	1,333	(est) 59.2%



**TEN-YEAR ENROLLMENT PROJECTION BY GRADE**

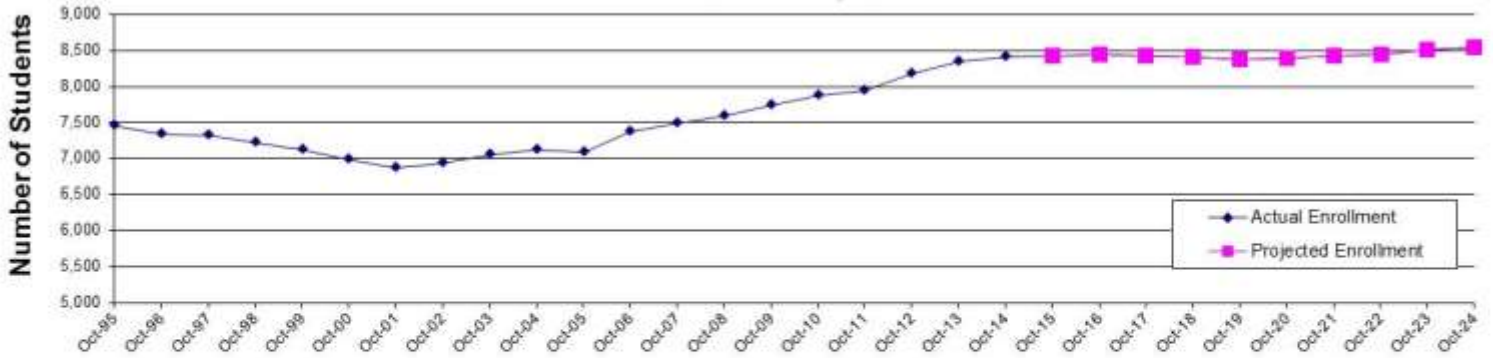
2015-16 Through 2024-25

YEAR	OCT.	OCT.	OCT.	OCT.	OCT.	OCT.	OCT.	OCT.	OCT.	OCT.	OCT.	OCT.	OCT.	OCT.	OCT.
	ACTUAL	ACTUAL	ACTUAL	ACTUAL	ACTUAL	PROJ.	PROJ.	PROJ.	PROJ.	PROJ.	PROJ.	PROJ.	PROJ.	PROJ.	PROJ.
	2010-11	2011-12	2012-13	2013-14	2014-15	2015-16	2016-17	2017-18	2018-19	2019-20	2020-21	2021-22	2022-23	2023-24	2024-25
ECSE	180	215	228	239	246	265	285	307	331	331	331	331	331	331	331
KINDERGARTEN	1315	1262	1326	1380	1321	1287	1318	1264	1297	1333	1333	1333	1333	1333	1333
GRADE 1	1339	1312	1293	1343	1389	1335	1300	1331	1277	1310	1347	1347	1347	1347	1347
GRADE 2	1310	1289	1312	1282	1325	1368	1315	1281	1311	1258	1290	1327	1327	1327	1327
GRADE 3	1208	1307	1265	1286	1293	1314	1357	1304	1271	1300	1248	1280	1316	1316	1316
GRADE 4	1179	1201	1317	1241	1301	1291	1312	1355	1302	1269	1298	1246	1278	1314	1314
GRADE 5	1172	1156	1184	1298	1244	1287	1277	1297	1340	1287	1255	1284	1232	1264	1299
Special Programs	174	192	247	279	285	285	285	285	285	285	285	285	285	285	285
TOTAL GRADES EC-5	7877	7934	8172	8348	8404	8432	8449	8424	8414	8373	8387	8433	8449	8517	8552
GRADE 6	1132	1168	1166	1172	1289	1230	1273	1263	1283	1326	1273	1241	1270	1218	1250
GRADE 7	1171	1113	1177	1147	1164	1269	1220	1263	1147	1273	1315	1263	1231	1260	1208
GRADE 8	1126	1146	1116	1164	1138	1143	1257	1208	1251	1241	1261	1302	1251	1219	1248
Special Programs	73	66	86	80	105	105	105	105	105	105	105	105	105	105	105
TOTAL GRADES 6-8	3502	3493	3545	3563	3696	3747	3855	3839	3892	3945	3954	3911	3857	3802	3811
GRADE 9	1237	1171	1195	1169	1214	1177	1192	1311	1260	1305	1295	1316	1358	1305	1272
GRADE 10	1236	1151	1181	1165	1134	1168	1142	1157	1272	1223	1266	1257	1277	1318	1266
GRADE 11	1106	1176	1102	1130	1119	1085	1117	1092	1107	1217	1170	1211	1202	1221	1261
GRADE 12	1114	1156	1153	1104	1155	1132	1098	1130	1105	1120	1232	1184	1225	1216	1236
Special Programs	312	314	386	410	422	422	422	422	422	422	422	422	422	422	422
TOTAL GRADES 9-12	5005	4968	5017	4978	5044	4984	4971	5112	5166	5287	5385	5390	5484	5482	5457
<b>TOTAL GRADES EC-12</b>	<b>16384</b>	<b>16395</b>	<b>16734</b>	<b>16889</b>	<b>17144</b>	<b>17163</b>	<b>17275</b>	<b>17375</b>	<b>17472</b>	<b>17605</b>	<b>17726</b>	<b>17734</b>	<b>17790</b>	<b>17801</b>	<b>17820</b>

# ENROLLMENT

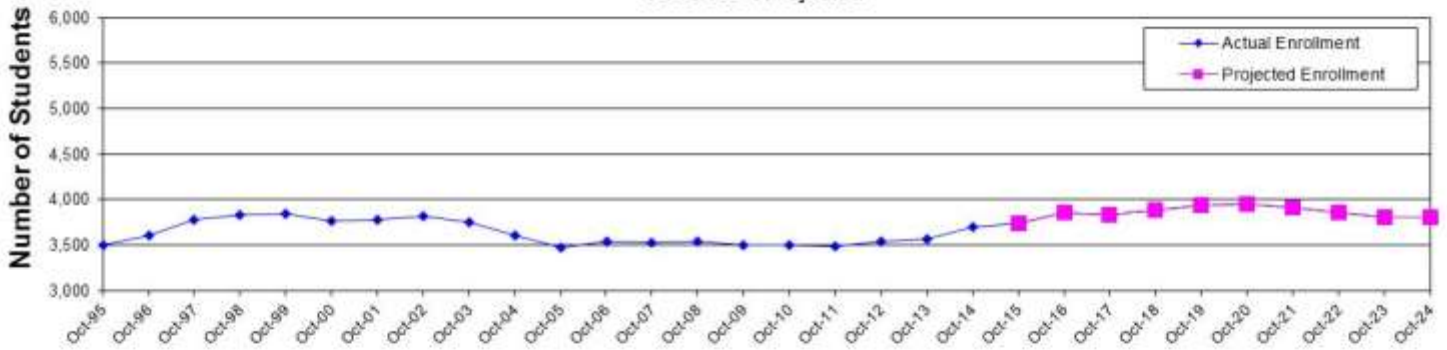
## Elementary Enrollment

1995-2014 Actual  
2015-2024 Projected



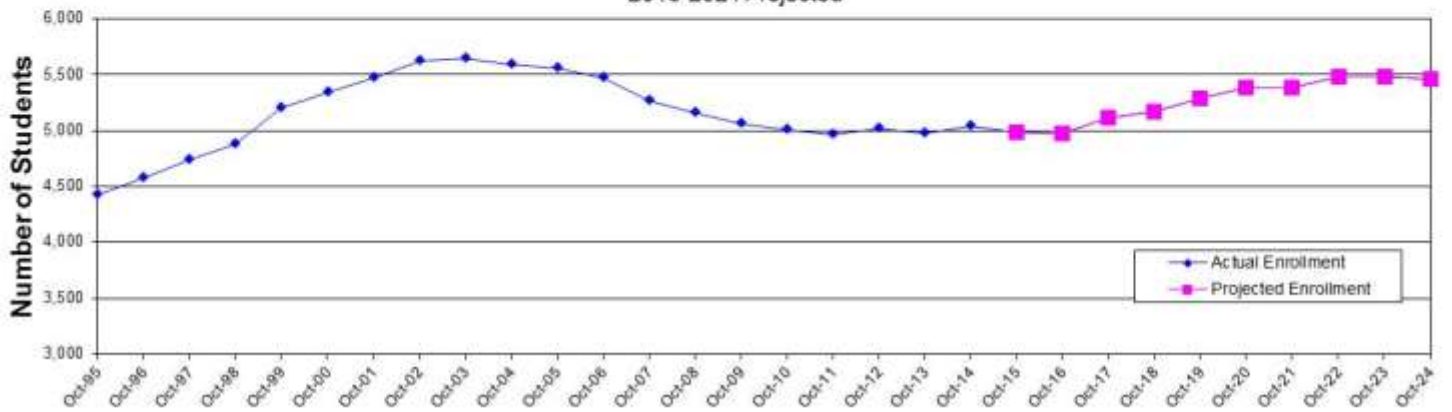
## Middle School Enrollment

1995-2014 Actual  
2015-2024 Projected



## High School Enrollment

1995-2014 Actual  
2015-2024 Projected







## 2014-15 PUBLIC SCHOOL ENROLLMENT BY SCHOOL AND GRADE

(Based on October 1st Enrollment))

	K	1	2	3	4	5	6	7	8	EC	NC	TOTAL
BAMBER VALLEY	129	149	128	153	143	157				13		872
BISHOP	77	91	74	70	60	57				27		456
CHURCHILL	76	59	55							25		215
Early Childhood Special Ed @ ESC										48		48
ELTON HILLS	82	95	90	94	96	81						538
FOLWELL	55	63	66	55	52	61				2		354
FRANKLIN	104	125	96	88	128	108						649
MONTESSORI AT FRANKLIN	36	31	33	31	30	30						191
GAGE	115	126	108	100	101	78				40		668
GIBBS	127	137	157	146	148	138				22		875
HOOVER				63	61	77				20		221
JEFFERSON	91	83	103	83	78	82				0		520
LINCOLN	51	47	48	52	51	43	46	42	37			417
LONGFELLOW	52	55	53	56	51	48						315
PINEWOOD	40	47	47	47	36	40				5		262
RIVERSIDE CENTRAL	103	103	85	98	97	78				21	109	694
SUNSET TERRACE	126	120	124	100	114	112				10		706
WASHINGTON	57	58	58	56	53	53				13		348
<b>TOTALS</b>	<b>1,321</b>	<b>1,389</b>	<b>1,325</b>	<b>1,292</b>	<b>1,299</b>	<b>1,243</b>	<b>46</b>	<b>42</b>	<b>37</b>	<b>246</b>	<b>109</b>	<b>8,349</b>

	3	4	5	6	7	8	9	10	11	12	NC	TOTAL
JOHN ADAMS				383	395	360						1,138
WILLOW CREEK				380	331	340						1,051
KELLOGG				320	244	264					37	865
FRIEDEL				159	150	136						445
CENTURY							357	340	335	353	31	1,416
JOHN MARSHALL							415	371	383	376		1,545
MAYO							436	418	397	372		1,623
ROCHESTER PHOENIX ACADEMY	1	2	1	1	2	1	6	5	4	3		26
TLC										13		13
TAP										38		38
ROCH ALTERNATIVE LEARNING CENTER					8	16	29	54	71	182		360
<b>TOTALS</b>	<b>1</b>	<b>2</b>	<b>1</b>	<b>1,243</b>	<b>1,130</b>	<b>1,117</b>	<b>1,243</b>	<b>1,188</b>	<b>1,190</b>	<b>1,337</b>	<b>68</b>	<b>8,520</b>

<i>Special Schools:</i>	
EARLY CHILDHOOD	117
CARE & TREATMENT	27
SPECIAL ED*	131
<b>TOTALS</b>	<b>275</b>

DISTRICT SUMMARY	
Elementary Total	8,349
Secondary Total	8,520
Special Schools	275
<b>TOTALS</b>	<b>17,144</b>

EC=Early Childhood

NC=Newcomer Classes

\*Out-of-District Special Education

**2014-2015 NONPUBLIC SCHOOL ENROLLMENT BY SCHOOL AND GRADE  
(Based on October 1st Enrollment)**

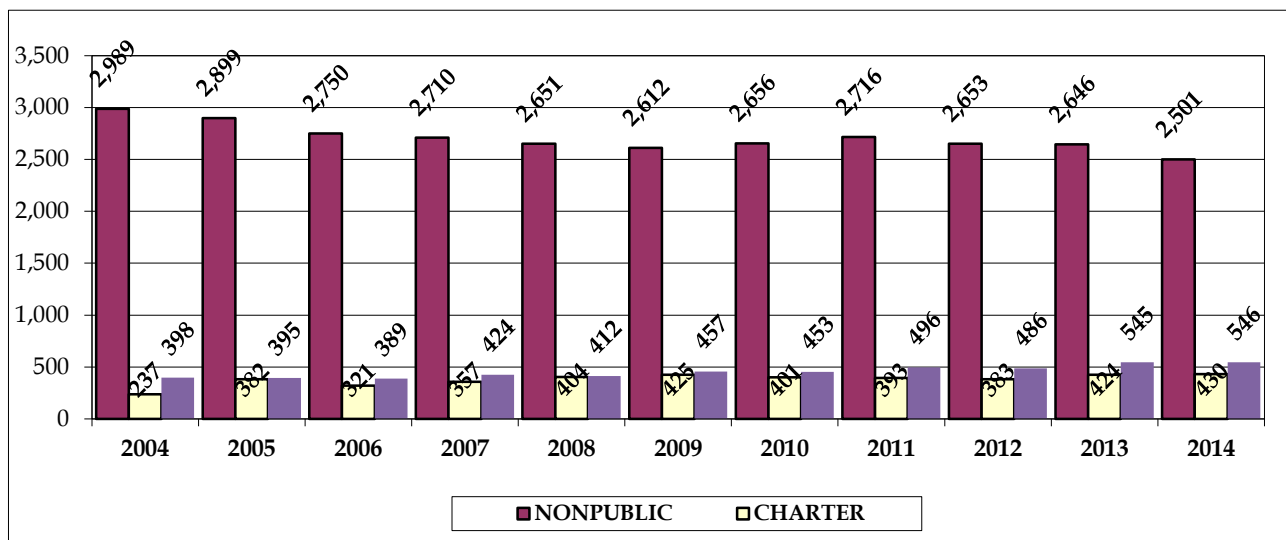
	<b>K</b>	<b>1</b>	<b>2</b>	<b>3</b>	<b>4</b>	<b>5</b>	<b>6</b>	<b>7</b>	<b>8</b>	<b>9</b>	<b>10</b>	<b>11</b>	<b>12</b>	<b>Total</b>
Ambassador Academy	2	2	2	3	1	3	2	0	0	0	0	0	0	15
Faith Christian	0	0	0	0	0	1	1	0	0	0	1	1	2	6
Greene Valley	0	0	0	0	0	0	0	0	0	0	0	0	0	0
Holy Spirit	30	37	51	29	36	41	27	36	41	0	0	0	0	328
Kingdom Kids	8	0	0	0	0	0	0	0	0	0	0	0	0	8
Lourdes	0	0	0	0	0	0	0	0	0	88	123	94	138	443
Pentecostal	1	2	2	5	0	0	0	1	1	0	0	0	1	13
Primrose	9	0	0	0	0	0	0	0	0	0	0	0	0	9
RCLS	29	26	21	35	34	30	25	19	28	0	0	0	0	247
Resurrection	11	17	18	13	15	18	13	13	15	0	0	0	0	133
Rochester Arts & Sciences Academy	12	15	9	11	4	0	0	0	0	0	0	0	0	51
Schaeffer	23	21	27	30	25	32	24	35	28	34	33	26	23	361
Seeds of Wisdom	4	0	3	4	4	3	0	0	0	0	1	2	0	21
St Francis	44	53	44	46	48	53	43	52	51	0	0	0	0	434
St Johns	0	0	0	0	0	50	43	42	47	0	0	0	0	182
St Pius	41	44	39	55	49	0	0	0	0	0	0	0	0	228
Victory	0	1	2	3	5	2	2	1	1	2	1	1	1	22
<b>TOTALS</b>	<b>214</b>	<b>218</b>	<b>218</b>	<b>234</b>	<b>221</b>	<b>233</b>	<b>180</b>	<b>199</b>	<b>212</b>	<b>124</b>	<b>159</b>	<b>124</b>	<b>165</b>	<b>2,501</b>
Home School	27	35	41	61	50	52	54	43	35	45	42	32	29	546
Rochester Math & Science Academy	29	30	31	31	32	28	30	31	30	0	0	0	0	272
Rochester Off Campus	0	0	0	0	0	0	0	0	0	23	4	37	27	91
Rochester STEM Academy	0	0	0	0	0	0	0	0	0	15	16	15	21	67
<b>TOTALS</b>	<b>56</b>	<b>65</b>	<b>72</b>	<b>92</b>	<b>82</b>	<b>80</b>	<b>84</b>	<b>74</b>	<b>65</b>	<b>83</b>	<b>62</b>	<b>84</b>	<b>77</b>	<b>976</b>
<b>Grand Total</b>														<b>3,477</b>

\*Note: in 2012-2013 Rochester Montessori was removed due to the school being in the Byron Public School District.

## PUBLIC, NONPUBLIC, HOME SCHOOL ENROLLMENTS 25-Year Comparison

YEAR	PUBLIC		NONPUBLIC		CHARTER		HOME SCHOOL		TOTAL ENROLL.
	Enroll.	%	Enroll.	%	Enroll.	%	Enroll.	%	
1990	14,025	85.7%	2,230	13.6%			117	0.7%	16,372
1991	14,620	85.8%	2,255	13.2%			158	0.9%	17,033
1992	15,038	85.6%	2,340	13.3%			182	1.0%	17,560
1993	15,194	84.5%	2,598	14.5%			187	1.0%	17,979
1994	15,265	83.7%	2,757	15.1%			225	1.2%	18,247
1995	15,376	83.2%	2,890	15.6%			215	1.2%	18,481
1996	15,529	83.3%	2,906	15.6%			215	1.2%	18,650
1997	15,845	83.2%	2,941	15.4%			250	1.3%	19,036
1998	15,934	82.9%	3,034	15.8%			255	1.3%	19,223
1999	16,182	82.5%	3,064	15.6%	88	0.4%	273	1.4%	19,607
2000	16,087	81.6%	3,142	15.9%	182	0.9%	300	1.5%	19,711
2001	16,123	81.3%	3,141	15.8%	199	1.0%	362	1.8%	19,825
2002	16,387	81.9%	3,102	15.5%	157	0.8%	370	1.8%	20,016
2003	16,447	82.0%	3,014	15.0%	209	1.0%	381	1.9%	20,051
2004	16,310	81.8%	2,989	15.0%	237	1.2%	398	2.0%	19,934
2005	16,109	81.4%	2,899	14.7%	382	1.9%	395	2.0%	19,785
2006	16,381	82.6%	2,750	13.9%	321	1.6%	389	2.0%	19,841
2007	16,296	82.4%	2,710	13.7%	357	1.8%	424	2.1%	19,787
2008	16,296	82.5%	2,651	13.4%	404	2.0%	412	2.1%	19,763
2009	16,312	82.4%	2,612	13.2%	425	2.1%	457	2.3%	19,806
2010	16,384	82.4%	2,656	13.4%	401	2.0%	453	2.3%	19,894
2011	16,395	82.0%	2,716	13.6%	393	2.0%	496	2.5%	20,000
2012	16,734	82.6%	2,653	13.1%	383	1.9%	486	2.4%	20,256
2013	16,889	82.4%	2,646	12.9%	424	2.1%	545	2.7%	20,504
2014	17,144	83.1%	2,501	12.1%	430	2.1%	546	2.6%	20,621

Note: Charter schools include: Rochester Off Campus, Rochester Math & Science Academy, and Rochester STEM Academy for 2013-2014



**NONPUBLIC, CHARTER, HOME SCHOOL ENROLLMENT HISTORY**  
**(Based on October 1st Enrollment)**

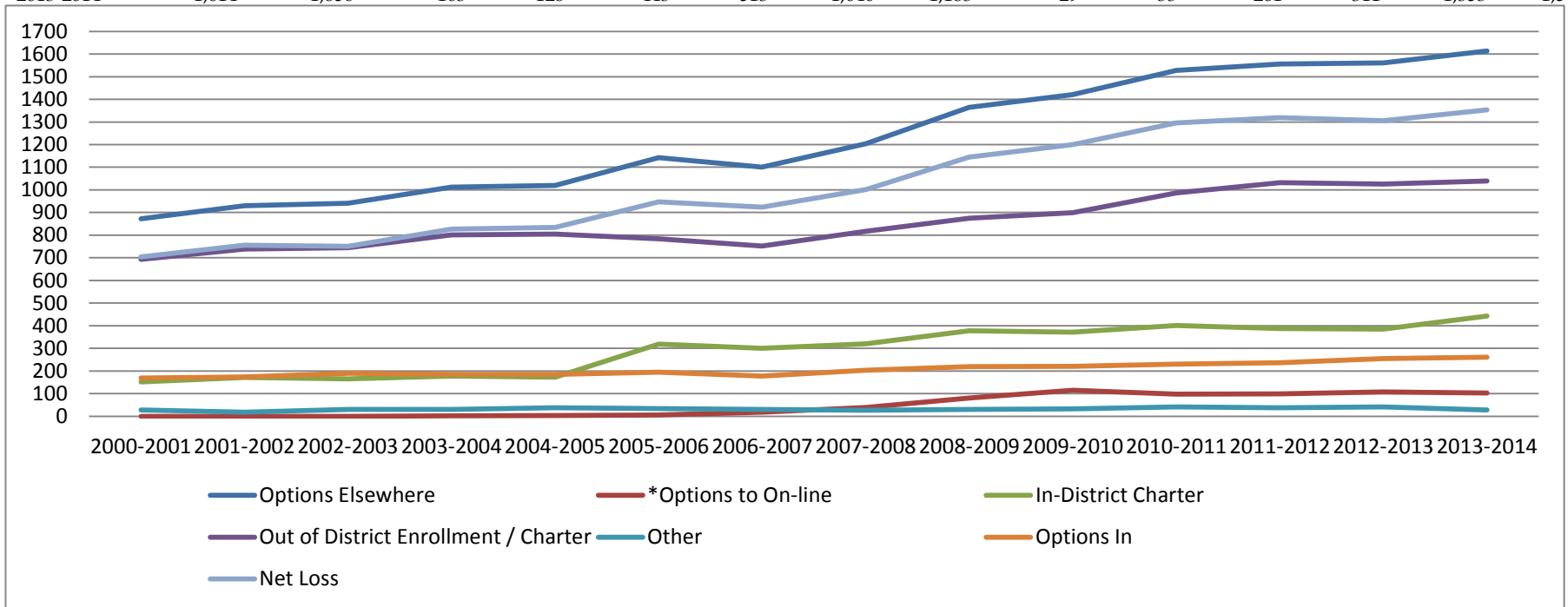
	2001-02	2002-03	2003-04	2004-05	2005-06	2006-07	2007-08	2008-09	2009-10	2010-11	2011-12	2012-13	2013-14	2014-15
Ambassador Academy								5	5	7	15	14	17	15
Faith Christian	33	46	48	56	53	55	49	19	18	20	15	10	4	6
Greene Valley	13	10	10	13	11	12	23	12	3	13	12	10	8	0
Holy Spirit	442	462	424	419	358	347	329	316	304	306	312	341	350	328
Kingdom Kids							18	22	21	22	22	22	22	8
Lourdes	535	554	564	566	579	541	504	460	443	460	474	468	477	443
Montessori	68	53	52	51	55	61	61	66	64	80	107	**	**	**
Pentecostal	23	27	19	18	20	12	13	15	12	12	16	19	17	13
Primrose											15	16	16	9
RCLS	351	332	340	314	307	284	276	286	279	270	276	250	265	247
Resurrection	110	111	115	117	123	118	119	136	121	123	120	131	136	133
Rochester Arts & Sciences Academy							21	20	29	26	33	38	44	51
Schaeffer	284	289	300	340	371	371	363	370	360	367	377	372	367	361
Seeds of Wisdom							24	19	19	14	14	18	23	21
St Francis	449	439	443	434	415	421	407	436	459	466	443	469	455	434
St Johns	332	315	373	368	328	213	210	200	205	187	181	186	168	182
St Pius	406	369	237	212	200	235	228	214	220	227	246	251	248	228
Victory	95	95	89	81	79	80	65	55	50	56	38	38	29	22
<b>SUBTOTAL</b>	<b>3,141</b>	<b>3,102</b>	<b>3,014</b>	<b>2,989</b>	<b>2,899</b>	<b>2,750</b>	<b>2,710</b>	<b>2,651</b>	<b>2,612</b>	<b>2,656</b>	<b>2,716</b>	<b>2,653</b>	<b>2,646</b>	<b>2,501</b>
Home School	362	370	381	398	395	389	424	412	457	453	496	486	545	546
Rochester Math & Science Academy					142	97	151	177	212	205	225	230	273	272
Rochester Off Campus	92	76	99	134	110	97	90	110	106	107	102	94	70	91
Studio Academy	107	81	110	103	130	127	116	117	107	89				
Rochester STEM Academy											66	59	81	67
<b>GRAND TOTAL</b>	<b>3,702</b>	<b>3,629</b>	<b>3,604</b>	<b>3,624</b>	<b>3,676</b>	<b>3,460</b>	<b>3,491</b>	<b>3,467</b>	<b>3,494</b>	<b>3,510</b>	<b>3,605</b>	<b>3,522</b>	<b>3,615</b>	<b>3,477</b>

\*\*Note: in 2012-2013 Rochester Montessori was removed due to the school being in the Byron Public School District.

**End of Year District ADM Report - Enrollment Options**  
**Data from MDE Web Site / Minnesota Funding Report System**

	Options Elsewhere		*Options to On-line		In-District Charter		Out of District Enrollment / Charter		Other		Options In		Net Loss	
	ADM	WADM	ADM	WADM	ADM	WADM	ADM	WADM	ADM	WADM	ADM	WADM	ADM	WADM
2000-2001	873	1,027	0	0	152	197	693	793	28	36	169	199	704	828
2001-2002	930	1,100	0	0	172	223	739	852	19	25	174	206	755	894
2002-2003	941	1,103	0	0	165	215	745	850	30	39	190	229	751	875
2003-2004	1,012	1,191	3	3	177	231	801	918	31	39	185	218	827	973
2004-2005	1,019	1,201	3	4	173	225	805	924	38	49	185	219	834	982
2005-2006	1,142	1,321	6	7	318	369	784	901	34	44	196	232	947	1,089
2006-2007	1,101	1,285	18	22	301	358	752	865	31	39	177	208	924	1,076
2007-2008	1,204	1,391	39	49	320	377	818	930	27	35	203	234	1,001	1,156
2008-2009	1,364	1,579	81	100	378	440	875	1,000	30	39	219	255	1,145	1,323
2009-2010	1,420	1,650	116	143	372	437	899	1,027	33	42	220	261	1,200	1,389
2010-2011	1,527	1,765	98	122	401	471	987	1,119	42	53	231	273	1,296	1,492
2011-2012	1,556	1,792	99	123	388	452	1,032	1,170	38	48	237	283	1,320	1,509
2012-2013	1,560	1,784	108	132	385	442	1,025	857	42	353	255	296	1,305	1,488
2013-2014	1,614	1,856	103	128	443	513	1,040	1,183	29	33	261	311	1,353	1,546

11



\*Blue Sky Charter #4082, Ed Visions #4151, Houston #294, MTCS Connections #4017, Insight (Brooklyn Center) #286, MN On-Line High School #4150, Fergus Falls #544, Spring Lake Park #16, Minneapolis #001-03, Intermediate SD #287-06,

## Top 13 Districts for Enrollment Options

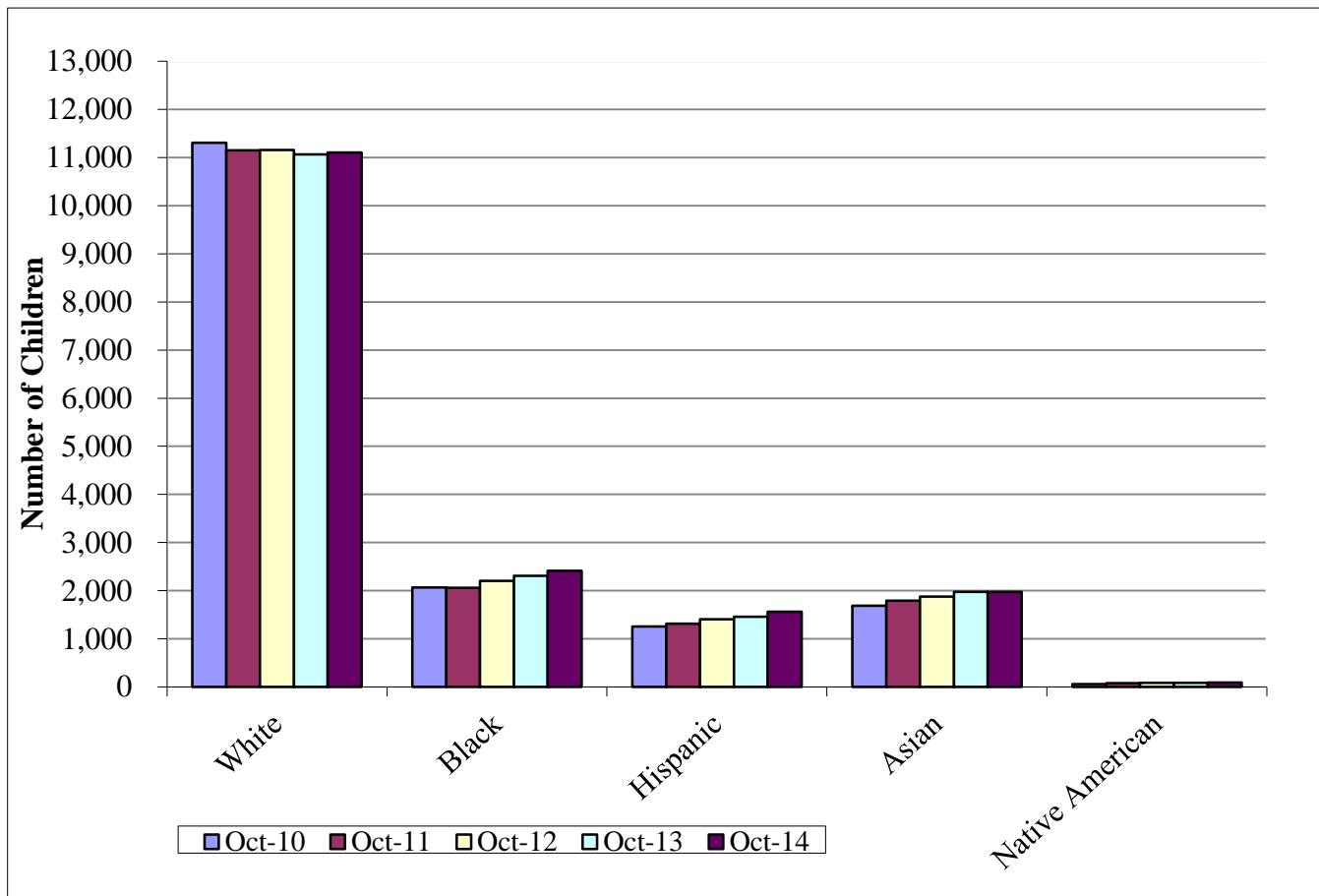
<i>Residents Attending Report for 2013-14</i>																		
Grade Level		01	02	03	04	05	06	07	08	09	10	11	12	EC	HK	KG	Total	(%)
<b>ROCHESTER</b>	<b>535</b>	<b>1,335</b>	<b>1,294</b>	<b>1,290</b>	<b>1,245</b>	<b>1,290</b>	<b>1,168</b>	<b>1,148</b>	<b>1,153</b>	<b>1,175</b>	<b>1,167</b>	<b>1,119</b>	<b>1,181</b>	<b>180</b>	<b>134</b>	<b>1,221</b>	<b>16,100</b>	<b>90.9%</b>
Residents Attending Other Districts		136	122	134	135	107	122	122	118	119	129	128	114	3	5	116	1,609	9.1%
<b>Total Resident Students</b>		1,471	1,416	1,424	1,380	1,397	1,290	1,270	1,271	1,293	1,296	1,248	1,295	182	139	1,337	17,709	100%
Top 13 Districts	Svc Dist	01	02	03	04	05	06	07	08	09	10	11	12	EC	HK	KG	Grand Total	RANK
ROCHESTER MATH AND SCIENCE ACADEMY	4135	31	37	31	43	38	29	29	23							26	285	(2)
BYRON PUBLIC SCHOOL DISTRICT	531	24	22	26	30	16	24	24	20	21	14	9	20	0	0	26	276	(3)
DOVER-EYOTA PUBLIC SCHOOL DISTRICT	533	24	17	18	20	20	21	21	20	24	21	21	16	1		17	262	(4)
STEWARTVILLE PUBLIC SCHOOL DISTRICT	534	25	17	34	17	12	24	18	14	10	13	10	8		4	21	227	(5)
PINE ISLAND PUBLIC SCHOOL DIST.	255	17	15	15	9	9	6	12	12	11	10	10	6	1		15	148	(6)
ROCHESTER STEM ACADEMY	4204									18	20	28	18				84	(7)
ROCHESTER OFF-CAMPUS CHARTER HIGH	4056									18	25	18	12				73	(8)
HOUSTON PUBLIC SCHOOL DISTRICT	294	1	1	3	2	3	4	6	4	6	5	6	6		1	2	51	(9)
PLAINVIEW-ELGIN-MILLVILLE	2899	6	3	1	5	2	5	3	4	4	3	6	3	0		3	49	(10)
MINNESOTA TRANSITIONS CHARTER SCH	4017	2		1			1	2	5	2	3	6	4				25	(11)
CHATFIELD PUBLIC SCHOOLS	227	1	1			4	2	2	3		2	3	2			1	21	(12)
KASSON-MANTORVILLE SCHOOL DISTRICT	204	0	5	2	1	1	2	1	2				1			4	19	(13)
BROOKLYN CENTER SCHOOL DISTRICT	286						1	0	1	1	1	3	6				13	(14)

12

<i>Students Served Report for 2013-14</i>																		
Grade Level		01	02	03	04	05	06	07	08	09	10	11	12	EC	HK	KG	Total	(%)
<b>ROCHESTER</b>	<b>535</b>	<b>1,335</b>	<b>1,294</b>	<b>1,290</b>	<b>1,245</b>	<b>1,290</b>	<b>1,168</b>	<b>1,148</b>	<b>1,153</b>	<b>1,175</b>	<b>1,167</b>	<b>1,119</b>	<b>1,181</b>	<b>180</b>	<b>134</b>	<b>1,221</b>	<b>16,100</b>	<b>98.3%</b>
Served FROM other Districts		25	13	19	13	18	12	12	22	21	30	44	40	2	2	11	284	1.7%
<b>Total Students Served</b>		1,360	1,307	1,309	1,258	1,308	1,180	1,160	1,174	1,195	1,196	1,164	1,221	182	136	1,232	16,384	100%
Top 13 Districts	Res Dist	01	02	03	04	05	06	07	08	09	10	11	12	EC	HK	KG	Grand Total	RANK
PINE ISLAND PUBLIC SCHOOL DIST.	255	16	5	10	6	9	6	6	6	7	9	7	6	0		3	96	(2)
STEWARTVILLE PUBLIC SCHOOL DISTRICT	534	2	2	2	3	3	2	2	4	2	5	9	6	0		2	44	(3)
PLAINVIEW-ELGIN-MILLVILLE	2899	2	2	2	1	2	1		0	1	5	4	3	1		1	25	(4)
BYRON PUBLIC SCHOOL DISTRICT	531	3	1	1	1	1		0	1	1	2	3	3	1		1	20	(5)
KASSON-MANTORVILLE SCHOOL DISTRICT	204	1		1		1			0	1	1	5	2	0	1	0	13	(6)
KINGSLAND PUBLIC SCHOOL DISTRICT	2137		1		0		0	0	2	1	1	2	2			1	11	(7)
CHATFIELD PUBLIC SCHOOLS	227					0	1		2	2	0	2	3				10	(8)
LAKE CITY PUBLIC SCHOOL DISTRICT	813			1		1		1	2		1		2			0	9	(9)
TRITON SCHOOL DISTRICT	2125			1		1	0	1		0	1	1	1		1	1	8	(10)
DOVER-EYOTA PUBLIC SCHOOL DISTRICT	533	1	1	0	0			0				1	4			1	8	(11)
ZUMBROTA-MAZEPPA SCHOOL DISTRICT	2805			0	2		1		0	0	1	2	1				8	(12)
LEWISTON-ALTURA PUBLIC SCHOOL DIST.	857			1		1				1		0	1				4	(13)
GRAND MEADOW PUBLIC SCHOOL DISTRICT	495								2			2					4	(14)

## ETHNICITY REPORT October 1st Counts

	Oct-10	Percent of Total	Oct-11	Percent of Total	Oct-12	Percent of Total	Oct-13	Percent of Total	Oct-14	Percent of Total
Native American	60	0.4%	78	0.5%	88	0.5%	85	0.5%	94	0.5%
Asian	1,689	10.3%	1,794	10.9%	1,880	11.2%	1,974	11.7%	1,976	11.5%
Hispanic	1,259	7.7%	1,315	8.0%	1,409	8.4%	1,459	8.6%	1,561	9.1%
Black	2,070	12.6%	2,058	12.6%	2,202	13.2%	2,308	13.7%	2,412	14.1%
White	11,306	69.0%	11,150	68.0%	11,155	66.7%	11,063	65.5%	11,101	64.8%
<b>TOTAL</b>	<b>16,384</b>		<b>16,395</b>		<b>16,734</b>		<b>16,889</b>		<b>17,144</b>	



## COMPARISON OF PROJECTED ENROLLMENTS WITH ACTUAL ENROLLMENTS

YEAR OF ACTUAL	ACTUAL	PROJECTED 1-YEAR EARLIER	PROJECTED 5-YEAR EARLIER	PROJECTED 1-YEAR DIFF EARLIER	PROJECTED 5-YEAR DIFF EARLIER
1995-96	15,376	15,629	16,286	-1.7%	-5.9%
1996-97	15,529	15,641	16,312	-0.7%	-5.0%
1997-98	15,845	15,752	16,559	0.6%	-4.5%
1998-99	15,934	16,010	16,471	-0.5%	-3.4%
1999-00	16,182	16,066	16,637	0.7%	-2.8%
2000-01	16,087	16,367	15,828	-1.7%	1.6%
2001-02	16,123	15,970	15,556	1.0%	3.5%
2002-03	16,387	16,134	15,726	1.5%	4.0%
2003-04	16,447	16,313	15,586	0.8%	5.2%
2004-05	16,310	16,388	16,518	-0.5%	-1.3%
2005-06	16,109	16,275	15,691	-1.0%	2.6%
2006-07	16,381	16,249	15,638	0.8%	4.5%
2007-08	16,296	16,555	16,405	-1.6%	-0.7%
2008-09	16,296	16,400	16,945	-0.6%	-4.0%
2009-10	16,312	16,327	16,735	-0.1%	-2.6%
2010-11	16,384	16,425	16,636	-0.3%	-1.5%
2011-12	16,395	16,401	17,449	0.0%	-6.4%
2012-13	16,734	16,373	17,564	2.2%	-5.0%
2013-14	16,889	16,758	17,378	0.8%	-2.9%
2014-15	17,144	16,984	17,439	0.9%	-1.7%
<b>TWENTY YEAR AVERAGE</b>				<b>0.9%</b>	<b>3.5%</b>

