

The Drawings, Specifications and other documents prepared by the Architect for this project are instruments of the Architect's service for use solely with respect to this project and the Architect shall be deemed the author of any and all other documents, including reproductions, copies, or other documents, prepared by the Architect or others on behalf of the Architect or others on other projects, for additions to this Project or for completion of this Project by others, unless the Architect agrees in writing and with appropriate compensation to the Architect.

Submission or distribution of documents to meet official regulatory requirements or for similar purposes in connection with the Project is not to be construed as publication in derogation of the Architect's reserved rights.

Each contractor shall thoroughly examine and become familiar with all contract documents for the project and not limit their work to drawings referenced for individual trades.

© Copyright 2011
BUSINESS PROPRIETARY INFORMATION

Township of Toms River NEW ANIMAL SHELTER

255 Oak Avenue
Toms River, NJ 08753

The Musial Group architecture
191 Mill Lane
Mountainside, NJ 07092
t. 908.232.2860
f. 908.232.2845
e. tmg@musialg.com

12-23-2011

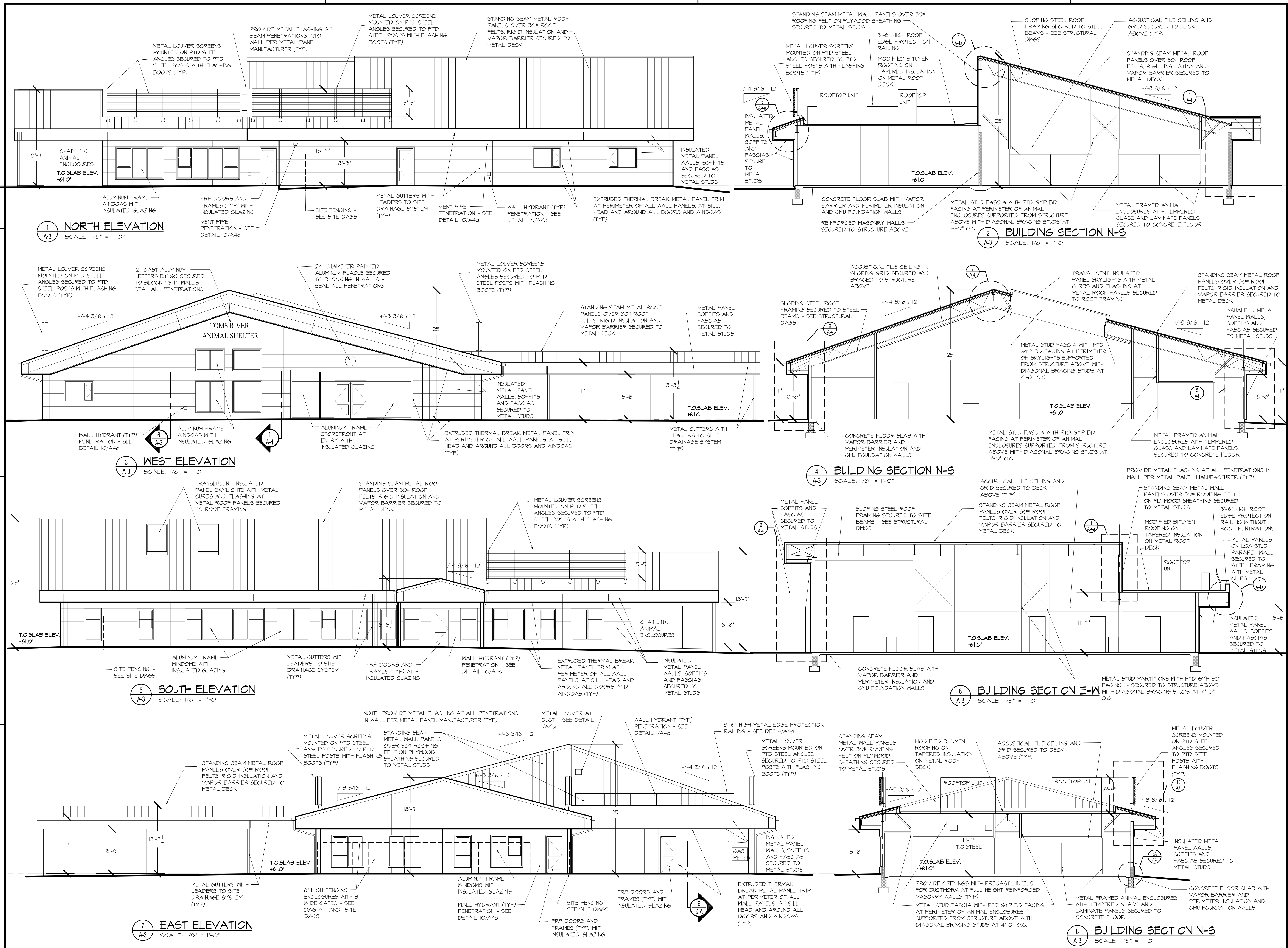
Revision Number	Revision Description	Revision Date

SCALE: 1/8" = 1'-0"
Drawn by JS
Checked by NSM

103010

BUILDING ELEVATIONS AND SECTIONS

A-3



ORIGINAL
IF IT IS RED IT IS AN ORIGINAL